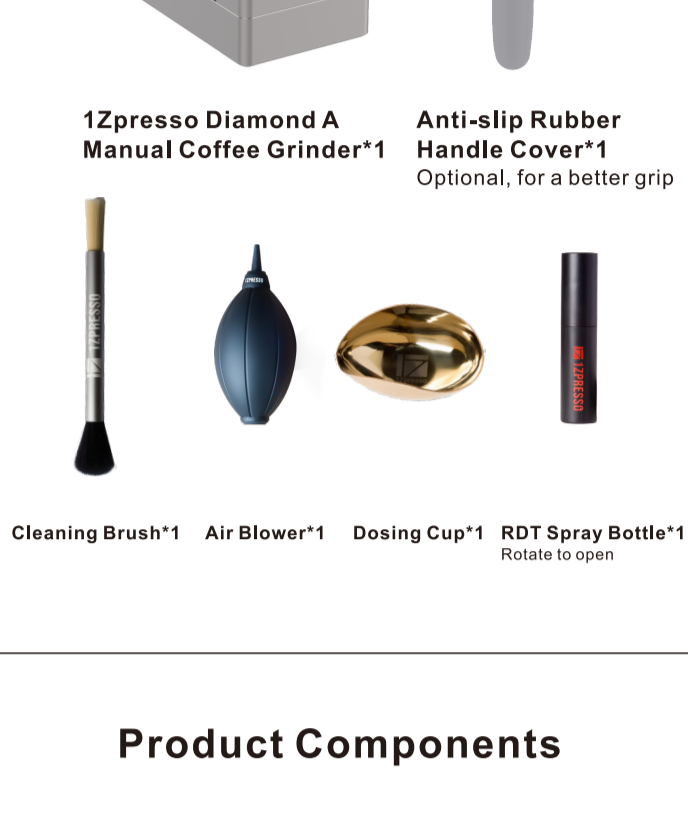




Diamond A Tabletop Manual Coffee Grinder

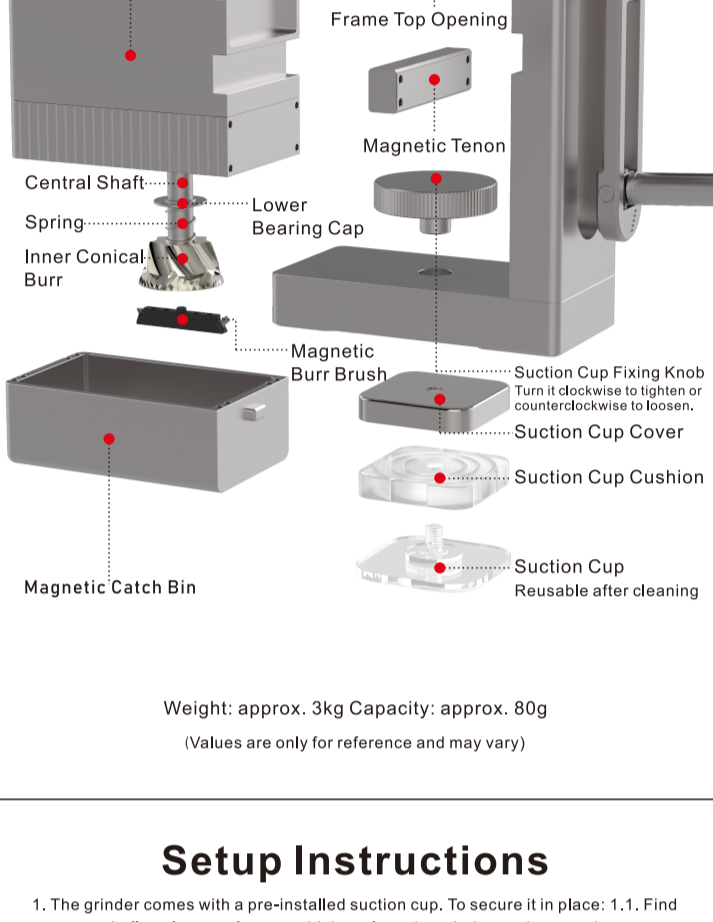


Package Contents



Weight: approx. 3kg Capacity: approx. 80g
(Values are only for reference and may vary)

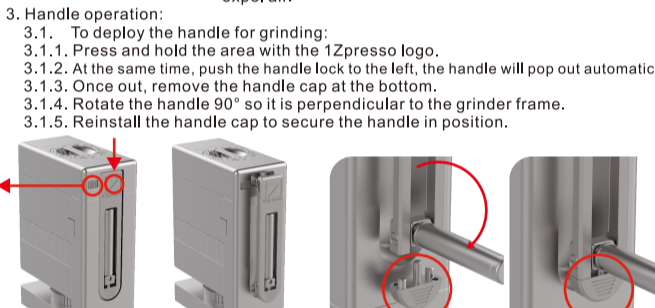
Product Components



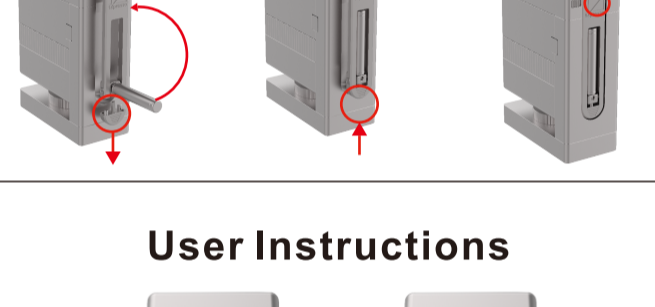
Weight: approx. 3kg Capacity: approx. 80g
(Values are only for reference and may vary)

Setup Instructions

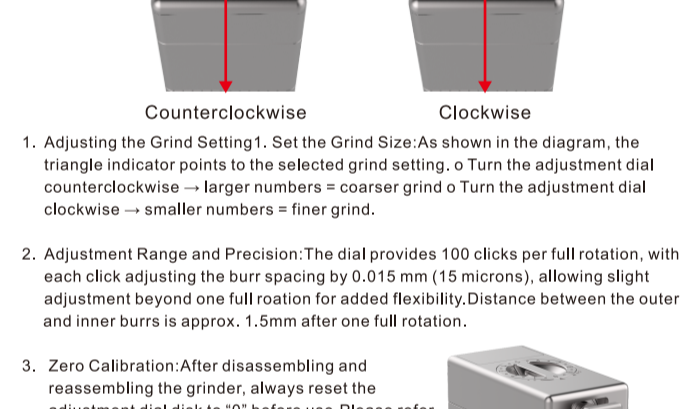
- The grinder comes with a pre-installed suction cup. To secure it in place: 1.1. Find a smooth, flat, clean surface on which to place the grinder, and proceed to remove the magnetic catch bin.
- Once removed, loosen the suction cup fixing knob and move/adjust the grinder to the desired location. 1.3. Hold the suction cup fixing knob firmly and tighten it clockwise to secure the grinder firmly in place.



- Handle operation:
 - To deploy the handle for grinding:
 - Press and hold the area with the 1Zpresso logo.
 - At the same time, push the handle lock to the left, the handle will pop out automatically.
 - Once out, remove the handle cap at the bottom.
 - Rotate the handle 90° so it is perpendicular to the grinder frame.
 - Reinstall the handle cap to secure the handle in position.
 - To fold the handle for storage:
 - Remove the handle cap at the bottom.
 - Rotate and position the handle back into its slot in a parallel position.
 - Reinstall the handle cap.
 - Press and hold the 1Zpresso logo area, then push the handle unit back into the grinder frame until it locks into place.



User Instructions

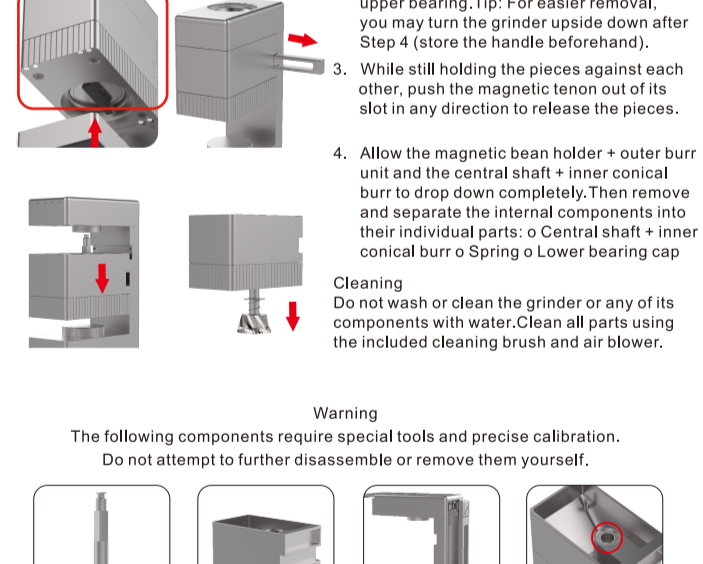


- Adjusting the Grind Setting: Set the Grind Size: As shown in the diagram, the triangle indicator points to the selected grind setting. Turn the adjustment dial counter-clockwise → larger numbers = coarser grind Turn the adjustment dial clockwise → smaller numbers = finer grind.
- Adjustment Range and Precision: The dial provides 100 clicks per full rotation, with each click adjusting the burr spacing by 0.015 mm (15 microns), allowing slight adjustment beyond one full rotation for added flexibility. Distance between the outer and inner burrs is approx. 1.5mm after one full rotation.
- Zero Calibration: After disassembling the grinder, always reset the adjustment dial back to "0" before use. Please refer to the Calibration Section for detailed instructions.
- Recommended Settings: For best results, refer to the Grind Settings Reference chart for recommended settings by brewing method.
- Start Grinding: Slide open the bean holder lid and add coffee beans or Close the bean holder lid securely or Deploy the handle unit for use Turn the handle clockwise to begin grinding



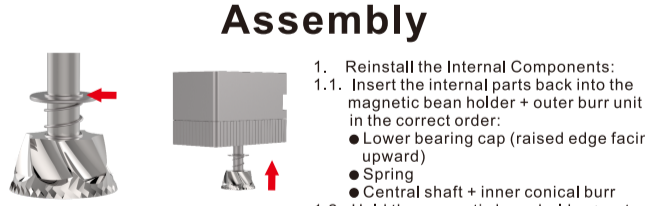
Cleaning and Maintenance For thorough cleaning, disassembly, and reassembly instructions, scan the QR code at the end of this manual or visit the official website to watch the tutorial video.

Disassembly



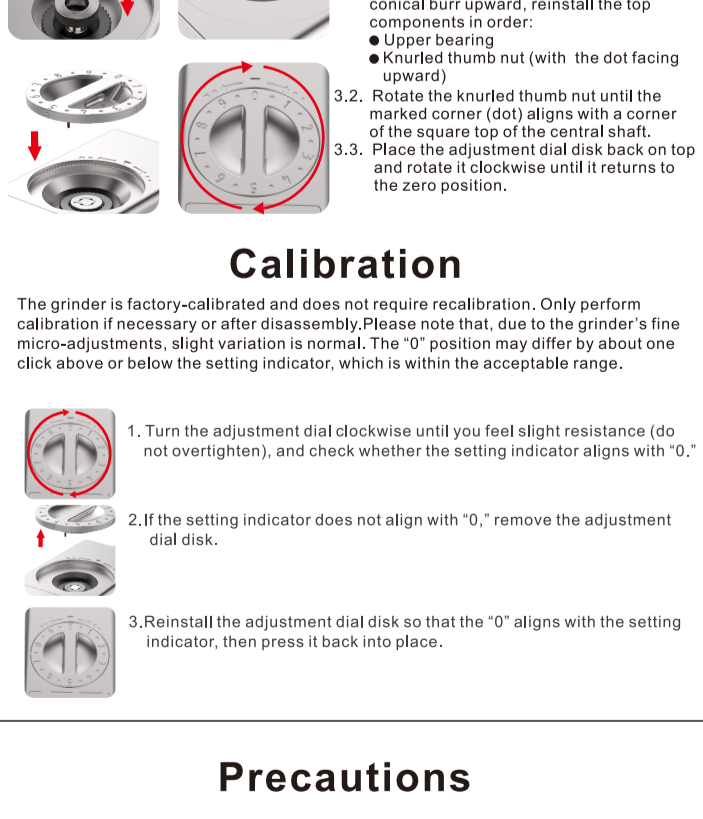
Warning

The following components require special tools and precise calibration. Do not attempt to further disassemble or remove them yourself.



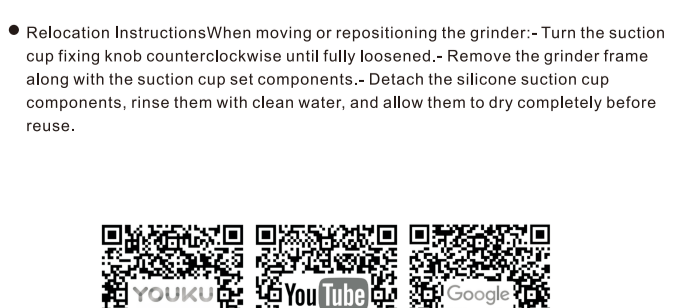
The central shaft and inner conical burr The magnetic bean holder and outer burr The grinder frame and handle unit The internal bearings inside the magnetic bean holder unit

Assembly



Calibration

The grinder is factory-calibrated and does not require recalibration. Only perform calibration if necessary or after disassembly. Please note that, due to the grinder's fine micro-adjustments, slight variation is normal. The "0" position may differ by about one click above or below the setting indicator, which is within the acceptable range.



Precautions

- This grinder is built with delicate components; do not wash it with water or expose it to excessive moisture.
- Do not wipe your grinder with solvents other than water and alcohol.
- It is recommended to clean the grinder regularly and store it in a dry environment to extend its lifespan.
- When reassembling, ensure all components are installed in the correct order and orientation by following the instructions in this manual.
- Keep out of reach of children. Do not allow children under six years old to operate this product without adult supervision.

